

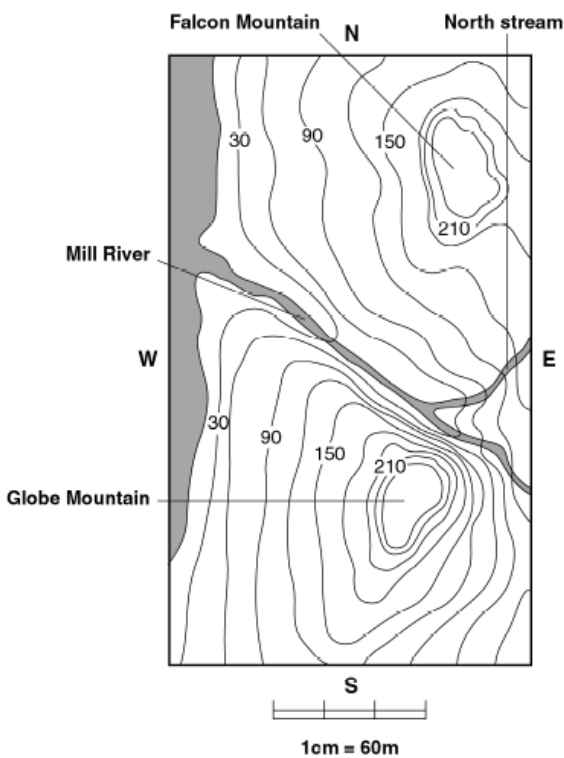
Name _____ Class _____ Date _____

MID YEAR STUDY GUIDE 2015

The Structure of Earth Key Terms

atmosphere	globe	map projection
contour interval	hydrosphere	scale
contour line	asthenosphere	specialist
core	lithosphere	sphere
crust	mantle	topography
distortion	map	elevation
Earth science		

Interpreting Maps – Use the topographic map to answer the questions.



1. What is the contour interval? _____
2. What are the lines on the map called?

3. How high above sea level is Falcon Mountain? _____
4. How high above sea level is Globe Mountain? _____
5. Which mountain has the highest elevation?

6. Is the east slope or the west slope of Globe Mountain steeper?

7. What is the scale of the map?

Rock Record Key Terms

absolute age

amber

cast

coprolite

relative age

fossil

fossil fuel

gastrolith

geologic time scale

half-life

index fossil

law of superposition

mold

Transportation Key Terms

land Transportation

space Transportation

propulsion

control

drag

gravity

air Transportation

universal System Model

guidance

support

friction

water Transportation

structural

suspension

lift

thrust

Universal System Model Key Terms

